

Tulane Medical Center Community Health Needs Assessment 2013

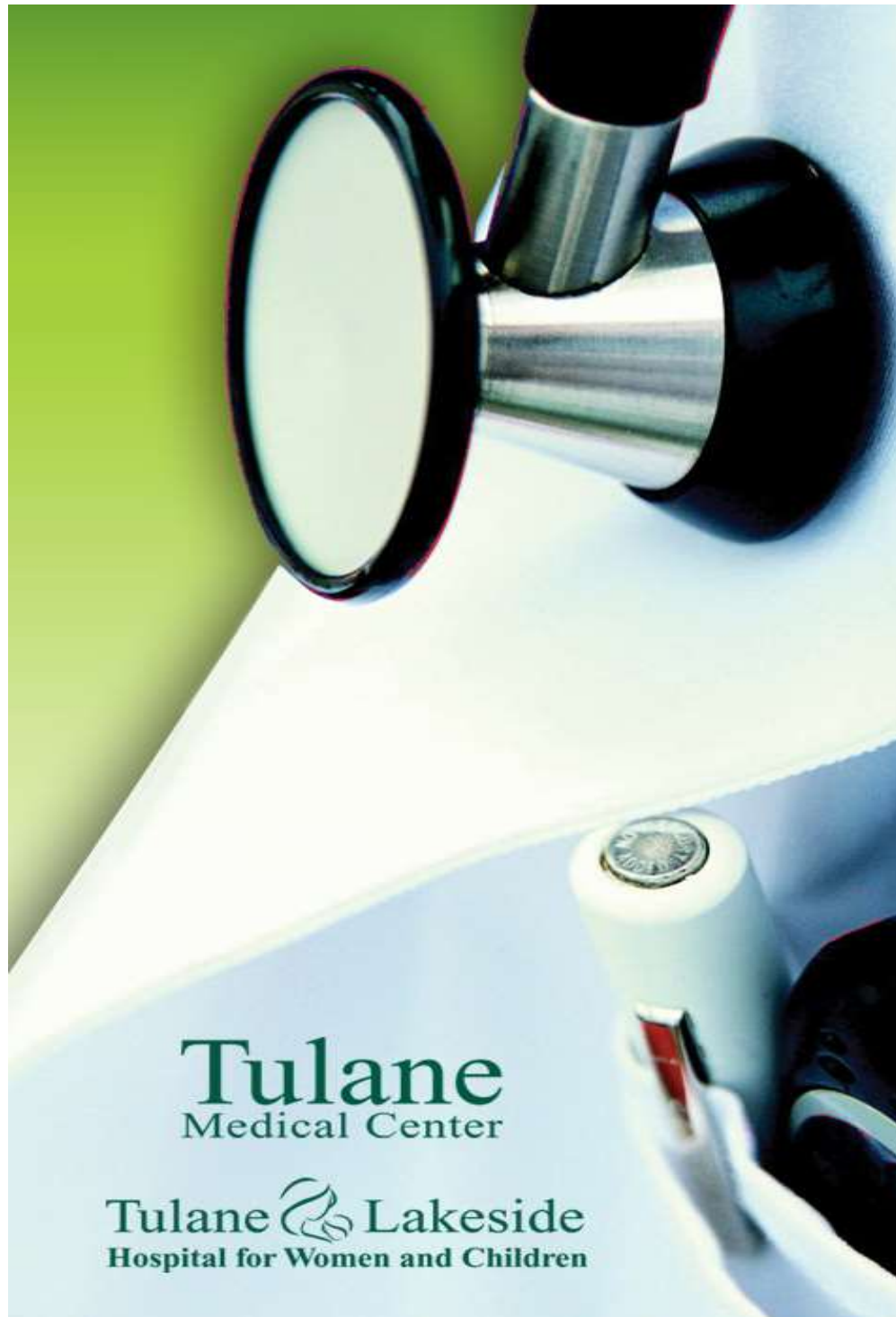


Table of Contents

OVERVIEW	1
WHO WAS INVOLVED IN THE ASSESSMENT	2
Metropolitan Hospital Council of New Orleans	2
Tripp Umbach	3
DEMOGRAPHIC ANALYSIS	3
ASSESSMENT TOOLS	4
Community Needs Index (CNI)	5
The Prevention Quality Indicators index (PQI)	9
Community Health Rankings	9
Focus Group and Qualitative Data	11
CONCLUSION	11
ADDRESSING IDENTIFIED NEEDS	12
Heart Disease and Stroke	12
Comprehensive Stroke Center	12
FIT-Friendly Worksite: Platinum Recognition 2013	12
Heart and Vascular Institute	12
Cancer	13
Comprehensive Cancer Clinic	13
Skin Cancer Screening	13
Nurse Navigator	13
ASC Patient Navigator	14
Lung Cancer Screening Program	14
Online Assessment Tools	14
Diabetes	14
Center for Diabetes	14
HIV/AIDS	15
Adolescent Medicine	15
Comprehensive Cancer Clinic	15
Infectious Disease	15
Women’s Health	15
Childhood and More	15
Tulane Center for Women’s Health	15

Respiratory Health	16
Tulane Lung Center	16
Adolescent Health	16
School Based Health Centers	16
Community Pediatrics and Global Health	14
Pediatric Pulmonology	14
Pediatric Sickle Cell Clinic	
Barriers	17
Informational News Segments	17
Gambit Wellness Expo	17
Community Festival First Aid Services	17
Primary Care Clinics	17
NEXT STEPS	17

OVERVIEW

Assessing community health needs and developing the appropriate plans to address these needs are essential to improving and sustaining the health of our communities. To do so, we must understand our community, its needs as identified, and a process that moves towards improving the health of New Orleans. A primary and shared focus among health care organizations is responding to the needs of our community. We are encouraged to reach out and develop initiatives incorporating several healthcare organizations to maximize resources and create a concerted effort to meet the needs of all. Furthermore, the Patient Protection and Affordable Care Act (PPACA), which now mandate all for-profit hospitals with non-profit affiliations submit Community Health Needs Assessments (CHNA).



Our Mission

To continue our tradition of excellence and expertise in providing the best quality care, education and research through the combined resources of Tulane University Hospital and Clinic and the Tulane School of Medicine.

About Tulane Medical Center

Tulane Medical Center (TMC), an acclaimed teaching, research and medical facility, serving the greater New Orleans area, began in 1834 as a small, medical college with seven faculty members. The school was founded by three young physicians, Drs. Warren Stone, John H. Harrison and Thomas Hunt, who had moved to New Orleans and recognized the need to study and treat “the peculiar diseases which prevail in this part of the Union,” including yellow fever and malaria. At the time, there were only 14 medical schools in the United States.

When the Louisiana Legislature established the University of Louisiana in 1847, the Medical College of Louisiana was incorporated into the school. The reputation of the medical college grew quickly, and its enrollment expanded over the years leading up to the Civil War.

The college closed during the Civil War, but reopened and continued through the Reconstruction years. In 1884, the medical school was named for merchant-philanthropist Paul Tulane, who made a \$1.25 million gift to establish Tulane University of Louisiana. In return, control of the University of Louisiana was turned over to the administrators of the Tulane Educational Fund.

Tulane Medical College had a continuous relationship with Charity Hospital from the mid-1800s through the 1970s. The hospital had been founded in 1736 by a successful French ship builder to treat patients who could not afford to pay for medical services. After 1844, students and faculty from Tulane Medical College provided care free-of-charge.

In 1843, the Louisiana Legislature granted land for a medical school building, including a lecture room, chemical laboratory, library, reading room, amphitheater and dissecting room in exchange for 10 years of gratis health care services. The building cost \$15,000, but the tradition of providing medical services continued for decades.

When Medicare and Medicaid were created in 1965, many poor patients chose other hospitals, and Charity’s patient load decreased. Tulane University opened its own private, 235-bed hospital in 1976 to offer high quality and specialized inpatient and outpatient hospital services, as well as postgraduate medical education programs and applied research projects.

In 1995, TMC was acquired by Hospital Corporation of America (HCA). Ninety percent of the medical school's physician faculty work in the hospital as well as teach. Currently TMC is co-owned by HCA and Tulane University School of Medicine. Though HCA owns majority share of TMC, the board of directors is equally represented between HCA representation and Tulane University School of Medicine representation.

HCA acquired Lakeside Hospital for Women in 1964, building a 94-bed facility in Metairie, outside New Orleans. In 2005, Lakeside merged with TMC, changing its name to Tulane-Lakeside Hospital. It now has 119 beds dedicated to serving healthcare needs in the greater New Orleans area.

TMC was the first hospital to reopen after Hurricane Katrina devastated healthcare in the region. TMC pioneered a neighborhood clinic and sickle cell day hospital post-Katrina to allow health care to be more easily accessed and cost-effective.

Current facilities for TMC include: Tulane-Lakeside Hospital, Tulane Hospital for Children, Tulane Cancer Center, Tulane Abdominal Transplant Institute, Tulane Center for Women's Health, Tulane Multispecialty Center Metairie, Tulane Multispecialty Center Uptown, Tulane Multispecialty Center Downtown and the Tulane Institute for Sports Medicine.

In addition to the services provided by TMC, the New Orleans community and surrounding areas are also served by numerous hospitals and health care providers.

The Largest area hospitals include:

- Children's Hospital
- East Jefferson General Hospital
- LSU Interim Hospital
- Ochsner Medical Center
- Ochsner Medical Center-Westbank
- Ochsner Medical Center-Kenner
- Ochsner Baptist Medical Center
- Ochsner Medical Center Northshore
- Slidell Memorial Hospital
- St. Tammany Parish Hospital
- Touro Infirmary
- West Jefferson Medical Center

WHO WAS INVOLVED IN THE ASSESSMENT

Metropolitan Hospital Council of New Orleans

Twelve healthcare organizations joined together to complete a comprehensive regional CHNA in the Greater New Orleans metropolitan area to better understand and plan for the current and future health needs of the communities they serve.

Specifically: "We have come together to identify and explore the ever changing healthcare landscape of the communities we serve. The goal is to identify the health needs of the community served, develop a deeper understanding of these needs and identify community health priorities.

Ultimately we will assess existing healthcare network infrastructure and work to link residents to these existing networks and programs during the implementation phase of the project.”

Together these twelve organizations created the Metropolitan Hospital Council of New Orleans (MHCNO), a non-profit, regional membership and service organization representing hospitals and healthcare organizations in conducting the CHNA. MHCNO, in consultation with Tripp Umbach, set out to identify the health needs of the communities served, develop a deeper understanding of these needs, and identify community health priorities.

Tripp Umbach

MHCNO contracted with Tripp Umbach, a private healthcare consulting firm headquartered in Pittsburgh, Pennsylvania to complete the regional community health needs assessment. Tripp Umbach is a recognized national leader in completing community health needs assessments, having conducted more than 200 community health needs assessments over the past 21 years. Today more than one in five Americans lives in a community where Tripp Umbach has completed a community health assessment.

Paul Umbach, founder and president of Tripp Umbach, is among the most experienced community health planners in the United States, having directed projects in every state and internationally. Tripp Umbach has written two national guide books on the topic of community health and has presented at more than 50 state and national community health conferences.

DEMOGRAPHIC ANALYSIS

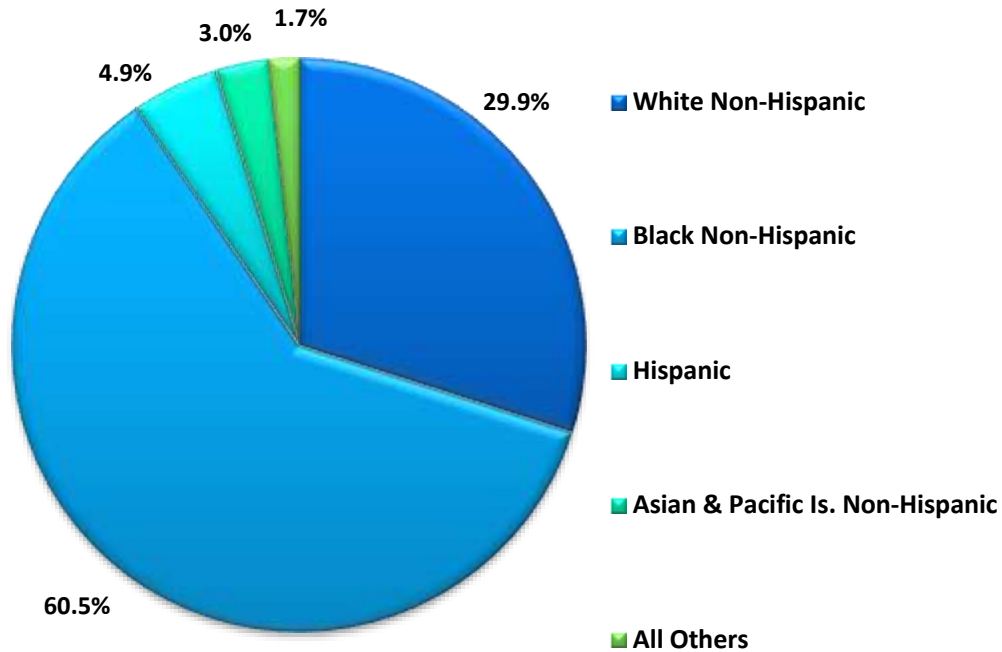
The MHCNO study area is comprised of seven parishes and three zip codes in surrounding parishes (Tangipahoa and Washington) and a county in Mississippi (Pearl River). The MHCNO study area accounts for 29% of Louisiana’s population, and Orleans Parish is the third largest parish in the state behind Jefferson Parish and East Baton Rouge Parish. The MHCNO study is mostly White Non-Hispanic at 55.3%, with a large Black, Non-Hispanic population at 33.7% and only 6.4% for Hispanic ethnicity.

Primary Market	
Total Population	864,698
Jefferson	445,117
Orleans	376,005
St. Bernard	43,576

Secondary Market	
Total Population	354,144
St. Tammany	234,895
St. Charles	50,744
St. John the Baptist	47,366
Plaquemines	21,139

**MHCNO 2011 Total Population
1,311,702**

Orleans Parish Demographics



The median household income for Orleans Parish is \$37,325 with a 7.1% unemployment rate and an 83.9% high school education or higher. As relates to the Community Health Needs Assessment, we are defining our community data by zip code.

In the MHCNO, 75% of those students enrolled in a public school graduate from high school. At 25%, the MHCNO has double the national benchmark of children living in poverty. The average level of income across the MHCNO is \$61,091, greater than the state average of \$55,788, but the MHCNO shows one of the higher rates of households making \$25,000 or less per year at 29.1%.

ASSESSMENT TOOLS

Tripp Umbach facilitated and managed a comprehensive regional community health needs assessment on behalf of MHCNO — resulting in the identification of regional community health needs. The assessment process included input from persons who represent the broad interests of the communities served by the hospital facilities, including those with special knowledge and expertise of public health issues. Other analytical data was collected in 2010-2011 – Community Needs Index, Prevention Quality Indicators index, County Health Rankings, Center for Disease and

Prevention, Louisiana Kids Count 2011-2012, Substance Abuse and Mental Health Services Administration, and the 2006 Louisiana Health and Population Survey

The data received from Tripp Umbach drilled down on the health needs for the MHCNO region. This data was compiled into a singular report along with attached appendixes of accumulated data. Several of the key metrics used to establish the health needs for the MHCNO region are listed below. From these tools and data collected TMC formulated its top priorities to better service the greater New Orleans area.

Community Needs Index (CNI): Because the CNI considers multiple factors that are known to limit health care access, the tool provides an accurate and useful assessment method at identifying and addressing the disproportionate unmet health-related needs of neighborhoods (zip code level). The five prominent socio-economic barriers to community health quantified in CNI include: Income, Insurance, Education, Culture/Language and Housing. CNI quantifies the five socio-economic barriers to community health utilizing a 5 point index scale where a score of 5 indicates the greatest need and 1, the lowest need.

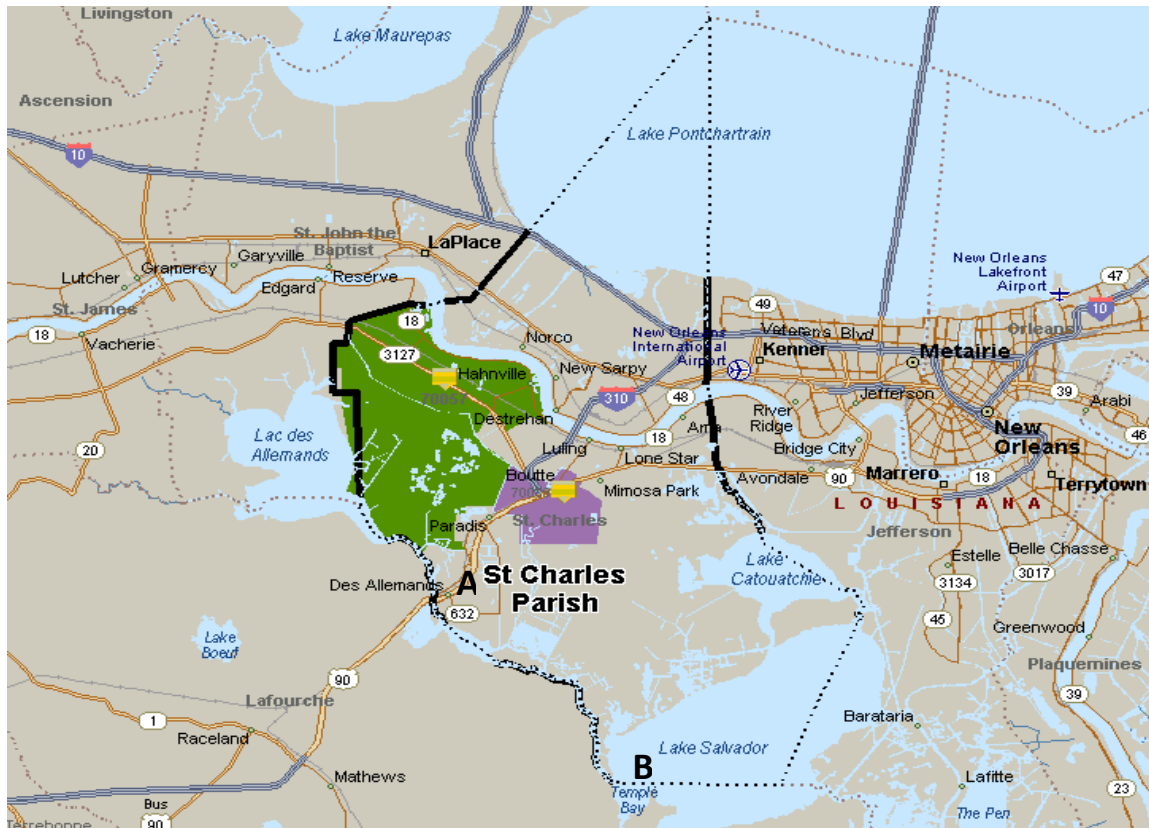
Though the population as a whole is best defined by the zip code level, TMC will refer to its populations served by the parish level in this CHNA. Below is a snapshot of TMC's primary markets: Orleans Parish, Jefferson Parish, and St. Bernard Parish



St. Bernard Parish

Zip	2011 Population	CNI Score	Poverty 65+	Poverty Children	Poverty Single w/kids	Minority	No High School Diploma	Unemployed	Uninsured
70075	5,825	3.6	15.1%	10.0%	29.0%	21.7%	18.6%	5.6%	11.9%
70043	19,038	3.8	10.4%	13.6%	30.8%	18.8%	19.2%	8.9%	13.6%
70032	4,017	4	10.5%	14.1%	42.3%	21.8%	22.6%	5.3%	15.1%
70085	6,261	4.2	29.5%	14.6%	35.2%	37.3%	30.3%	14.0%	15.2%
70092	8,435	4.6	25.7%	20.6%	53.0%	60.6%	24.8%	12.4%	15.2%
70031	1,440	1.8	14.3%	0.0%	0.0%	30.5%	10.3%	5.2%	7.3%
70047	13,009	2	9.9%	7.4%	25.6%	25.2%	9.9%	3.8%	5.3%
70070	12,366	2.2	13.3%	8.8%	36.3%	26.1%	11.0%	5.7%	6.9%
70030	4,620	3	18.1%	13.6%	37.9%	11.9%	24.5%	6.5%	11.1%
70079	3,539	3	4.9%	15.8%	46.8%	27.2%	16.3%	8.0%	10.7%
70080	1,455	3	14.9%	8.3%	18.4%	17.8%	17.6%	6.3%	9.4%
70087	8,011	3.2	16.7%	11.9%	14.1%	55.4%	14.8%	6.8%	10.8%
70057	3,865	4.4	22.3%	33.1%	76.0%	63.7%	23.8%	14.0%	15.8%
70039	2,439	4.6	41.1%	33.6%	60.5%	62.5%	35.5%	13.9%	19.0%

St. Bernard Parish – Communities most in need



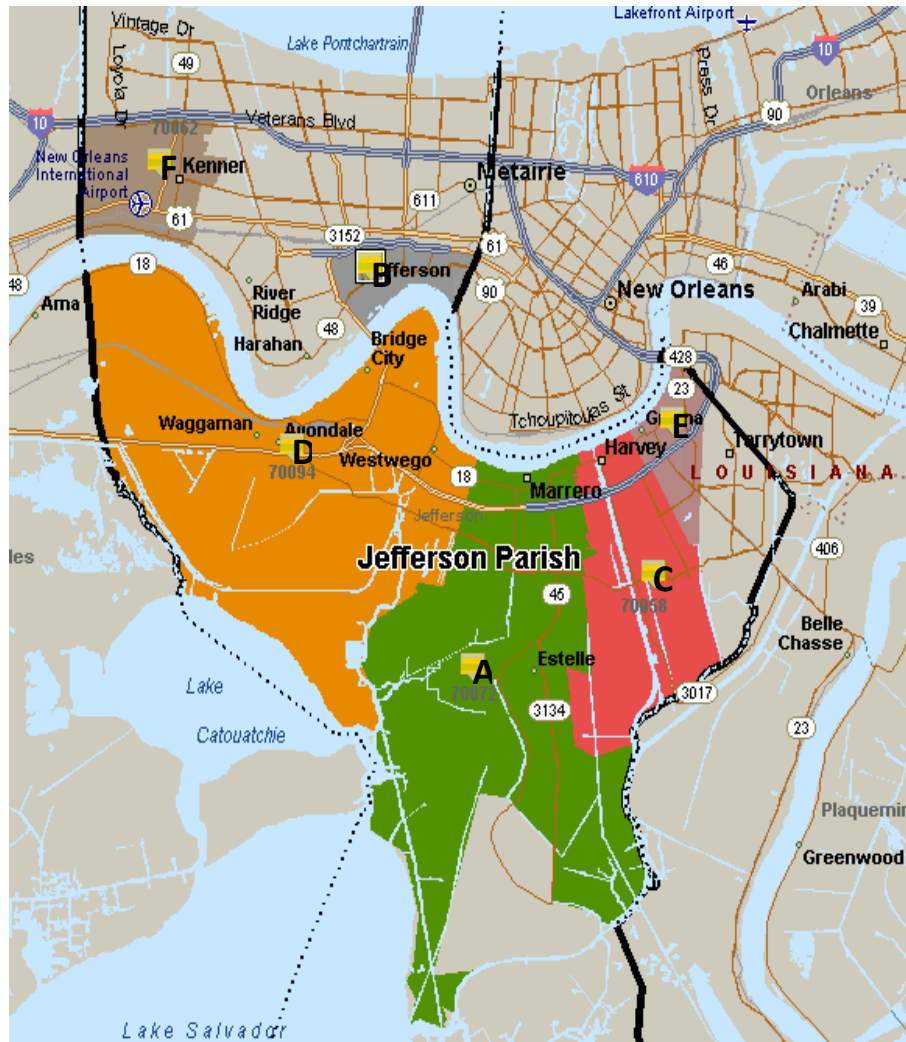
- A 70057
- B 70039

Jefferson Parish

Zip	2011 Population	CNI Score	Poverty 65+	Poverty Children	Poverty Single w/kids	Minority	No High School Diploma	Unemployed	Uninsured
70005	23,320	2.6	8.3%	4.0%	14.2%	11.0%	8.9%	4.7%	9.2%
70123	27,006	2.8	8.6%	8.2%	21.0%	17.5%	10.4%	4.3%	8.1%
70003	40,620	3	8.1%	13.1%	30.5%	27.6%	12.9%	5.1%	9.1%
70006	15,286	3	6.8%	10.9%	28.1%	25.4%	11.0%	3.8%	7.9%
70002	18,692	3.2	8.6%	9.3%	27.2%	32.4%	9.7%	3.7%	11.1%
70036	1,493	3.2	9.5%	20.3%	41.4%	16.5%	33.8%	6.6%	14.7%
70067	4,466	3.2	22.2%	17.7%	40.3%	14.3%	35.1%	6.3%	12.4%
70358	1,606	3.2	17.1%	12.2%	28.1%	13.8%	27.2%	5.8%	12.1%
70001	38,246	3.4	10.7%	10.8%	28.8%	25.6%	11.8%	4.8%	10.7%
70065	52,422	3.4	9.2%	10.4%	27.3%	45.9%	14.3%	5.8%	7.7%
70056	40,153	3.6	7.3%	15.7%	34.5%	59.7%	14.0%	6.5%	9.9%
70072	59,090	4	15.5%	18.8%	43.9%	49.5%	24.3%	7.7%	11.7%
70121	12,918	4	9.3%	16.3%	34.2%	39.1%	20.4%	6.3%	13.6%
70058	42,172	4.2	13.7%	22.8%	49.6%	71.9%	19.5%	9.0%	11.8%
70094	33,825	4.6	15.3%	27.0%	50.3%	54.6%	31.8%	10.4%	15.7%
70053	16,560	4.8	23.8%	30.7%	48.3%	57.7%	25.7%	10.3%	16.6%
70062	17,242	4.8	20.6%	30.4%	52.9%	62.1%	27.0%	10.6%	17.4%

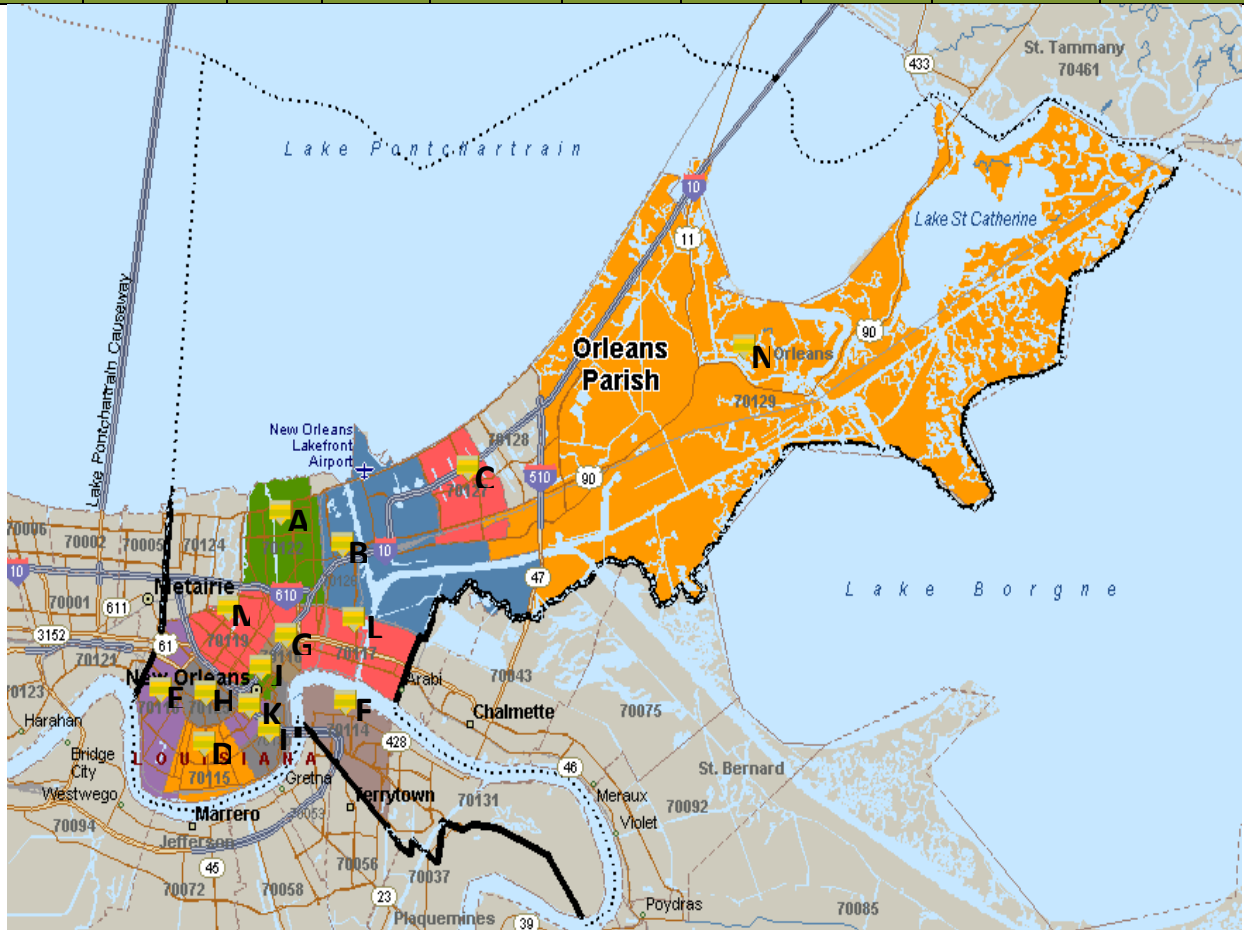
Jefferson Parish – Communities most in need

- A** 70072
- B** 70121
- C** 70058
- D** 70094
- E** 70053
- F** 70062



Orleans Parish

Zip	2011 Population	CNI Score	Poverty 65+	Poverty Children	Poverty Single w/kids	Minority	No High School Diploma	Unemployed	Uninsured
70124	13,887	2.2	5.2%	5.2%	11.8%	9.9%	5.2%	3.1%	8.8%
70131	32,747	3.4	9.7%	14.3%	31.8%	60.4%	8.8%	8.9%	12.1%
70128	15,639	3.6	19.9%	19.1%	37.6%	93.3%	11.1%	10.0%	13.8%
70122	27,994	4.2	15.5%	30.2%	50.9%	80.2%	13.2%	10.8%	19.2%
70126	19,845	4.2	15.5%	26.3%	39.7%	91.4%	14.6%	11.3%	19.0%
70127	17,169	4.2	16.5%	22.1%	32.8%	90.1%	12.9%	11.4%	20.3%
70115	39,129	4.6	23.7%	35.3%	56.5%	50.9%	13.9%	11.2%	21.5%
70118	36,947	4.6	17.7%	27.5%	46.4%	52.2%	13.9%	10.7%	22.2%
70114	30,971	4.8	28.0%	40.3%	60.7%	81.4%	19.6%	13.8%	25.5%
70116	14,978	4.8	34.0%	51.7%	61.7%	63.7%	18.6%	16.5%	25.6%
70125	14,907	4.8	27.6%	51.8%	65.1%	72.6%	18.6%	19.1%	26.2%
70130	18,063	4.8	24.7%	51.7%	68.5%	53.7%	17.8%	14.5%	22.7%
70112	6,596	5	50.2%	83.0%	86.3%	80.6%	29.6%	30.7%	44.0%
70113	9,427	5	41.8%	55.2%	66.7%	91.1%	37.5%	27.4%	40.8%
70117	26,689	5	33.2%	44.6%	58.4%	85.0%	26.5%	17.2%	30.6%
70119	40,126	5	25.9%	41.0%	56.2%	77.2%	24.8%	14.1%	25.3%
70129	10,891	5	22.8%	34.1%	57.7%	89.0%	27.8%	14.0%	22.1%



Orleans Parish – Communities most in need

The Prevention Quality Indicators index (PQI): was developed by the Agency for Healthcare Research and Quality (AHRQ). The AHRQ model was applied to quantify the PQI within the MHCNO region and Louisiana. The PQI index identifies potentially avoidable hospitalizations for the benefit of targeting priorities and overall community health. The quality indicator rates are derived from inpatient discharges by zip code using ICD diagnosis and procedure codes. There are 14 quality indicators. Lower index scores represent fewer admissions for each of the PQIs.

	County / Market	
	MHCNO Total	Orleans
PQI1	1.03	1.58
PQI2	0.26	0.24
PQI3	1.32	1.46
PQI5	2.47	1.73
PQI7	0.75	1.03
PQI8	4.7	4.37
PQI9	2.25	1.98
PQI10	0.74	0.48
PQI11	3.02	2.31
PQI12	2.54	2.05
PQI13	0.16	0.08
PQI14	0.14	0.16
PQI15	2.54	3.28
PQI16	0.93	0.9

Chronic Lung Conditions		Heart Conditions	
PQI 5 Chronic Obstructive Pulmonary Disease Admission Rate		PQI 7 Hypertension Admission Rate	
PQI 15 Adult Asthma Admission Rate		PQI 8 Congestive Heart Failure Admission Rate	
		PQI 13 Angina Without Procedure Admission Rate	
Diabetes		Other Conditions	
PQI 1 Diabetes Short-Term Complications Admission Rate		PQI 2 Perforated Appendix Admission Rate	
PQI 3 Diabetes Long-Term Complications Admission Rate		PQI 9 Low Birth Weight Rate	
PQI 14 Uncontrolled Diabetes Admission Rate		PQI 10 Dehydration Admission Rate	
PQI 16 Lower Extremity Amputation Rate Among Diabetic Patients		PQI 11 Bacterial Pneumonia Admission Rate	
		PQI 12 Urinary Tract Infection Admission Rate	

Community Health Rankings

“We measure two types of health outcomes to represent how health each county is: how long people live (mortality) and how healthy people feel (morbidity). These outcomes are the result of a collection of health factors and are influenced by programs and policies at the local, state, and federal levels.” The Robert Wood Johnson Foundation is working in collaboration with the University of Wisconsin Population Health Institute to develop these Rankings for each state’s counties.¹ Using the same principles, MHCNO compiled data to satisfy the metrics used by the County Health Rankings site in comparison with national benchmarks. Orleans Parish Ranks 60th among the 64 parishes in Louisiana based on data found by the MHCNO. Jefferson Parish and St. Bernard Parish ranked 14th and 62nd respectively. According to the County Health Rankings, Orleans Parish is almost triple the national benchmark for premature death, teen birth rate, and children in poverty. Of the 17 zip codes inside Orleans Parish 14 are communities most in need based on CNI. St. Bernard is ranked the unhealthiest in the state for Clinical Care and Access to Care. Even though Jefferson Parish shows the highest level of positive outcomes within the MHCNO region, Jefferson Parish also shows the highest rate of people going nowhere for healthcare.

¹ <http://www.countyhealthrankings.org/>

Displayed below is data for TMC's largest primary market, Orleans Parish, compared to state and national benchmarks.

Orleans Parish Health Rankings	Orleans	Louisiana	National
Health Outcomes - Rank	60		
% Diabetic	12%	12%	12%
HIV prevalence rate	1931	444	440
Mortality - Rank	62		
Premature death	13987	10361	5564
Morbidity - Rank	45		
Poor or fair health	18%	19%	10%
Poor physical health days	3.5	3.7	2.6
Poor mental health days	3.6	3.2	2.3
Low birth weight	13%	11%	6%
Health Factors - Rank	27		
Clinical Care - Rank	20		
Uninsured	27	20	11
Primary care physicians	526:1	863:1	1067:1
Preventable hospital stays	59	93	47
Diabetic screening	74%	79%	90%
Mammography screening	60%	63%	73%
Health Behaviors - Rank	11		
Adult smoking	21%	22%	13%
Adult obesity	30%	33%	25%
Physical inactivity	29%	30%	21%
Excessive drinking	19%	15%	7%
Motor vehicle crash death rate	13	22	10
Sexually transmitted infections	1152	626	92
Teen birth rate	55	55	21
Social & Economic Factors - Rank	52		
High school graduation	66	67	
Some college	61%	52%	70%
Unemployment	9%	8%	5%
Children in poverty	41%	27%	14%
Inadequate social support	25%	23%	14%
Children in single-parent households	60%	41%	20%
Violent crime rate	1074	676	66
Physical Environment - Rank	21		
Air pollution-particulate matter days	2	4	8.8
Air pollution-ozone days	5	7	
Access to recreational facilities	6.5	9.2	16
Limited access to healthy foods	21%	14%	1%
Health Care			
Mental health providers	1256:1	4381:1	4379:1

Orleans Parish Health Rankings	Orleans	Louisiana	National
Social & Economical Factors			
Median household income	\$36,525.00	\$42,510.00	\$41,804.00
% High housing costs	45%	29%	29%
% Children eligible for free lunch	79%	63%	59%
% Illiterate	18.2%	16%	
Homicide rate	55	13	13
Physical Environment			
Access to healthy foods	68%	60%	
% Commuting alone	68%	81%	82%

Focus Group and Qualitative Data

Tripp Umbach’s independent review of existing data, in-depth interviews with approximately 100 key regional stakeholders representing a cross-section of agencies, and detailed input provided by fourteen (approximately 203 participants) community focus groups resulted in the identification of three key regional health needs in the Greater New Orleans metropolitan area.

Qualitative data was gathered during 13 separate focus groups conducted with target populations that were defined by members of the Metropolitan Hospital Council of New Orleans (MHCNO) participating in a regional Community Health Needs Assessment (CHNA).

Top community concerns include: Access Barriers to Primary, Preventative and Mental Health Care Services, Access Barriers to Community/Support Services, and Barriers to Healthy Living Options/Accountability. Approximately 173 residents from the Greater New Orleans Metropolitan Area participated in the focus groups each providing direct input related to top health needs of themselves, their families and communities.

- Access to healthcare and medical services for at risk populations (i.e. primary, preventative, and mental)
- Barriers to community and support services for at risk populations
- Barriers to healthy living options and increased resident accountability issues

CONCLUSION

Analysis from multiple data sources and surveys helped to prioritize the health and disease burden for our community. These issues were then vetted with healthcare professionals and the hospital community to verify and agree on their priority. Using input from health care professionals within the hospital community and based on common threads in the data sources identified above, TMC prioritized the top eight health risks in our community.

The TMC Community Health Needs Assessment identifies eight health priorities that require a continuum of services including awareness, education, and prevention methods for the following.

- Heart Disease/Stroke
- Cancer
- Diabetes
- HIV/AIDS
- Women's Health
- Respiratory Health
- Adolescent Health
- Barriers

ADDRESSING IDENTIFIED NEEDS

TMC currently offers several programs and services that address the identified needs in our community. In the order in which the needs of the community are prioritized the, associated programs and services are listed below.

Heart Disease and Stroke

Comprehensive Stroke Center

The Tulane Stroke Program, effective October 2013, is certified as a Comprehensive Stroke Center by the Joint Commission. Prior to achieving this new designation, the Tulane Stroke Program was certified as a Primary Stroke Center, the first in Orleans Parish. This means that we have proved to a national accreditation body that we consistently meet and/or surpass national standardized guidelines for the care of stroke patients. The American Heart Association has also awarded the TMC Stroke Program with its "Gold Plus" recognition, the highest achievement awarded and one of only 2 Stroke Programs in Louisiana with 'Gold Plus' recognition. To better treat the patients in the New Orleans region, TMC also added three new Neurosurgeons, increased the number of neuro critical care beds, and has begun to develop a Telestroke Program network with nine partnering hospitals who otherwise are challenged to treat this critical condition of a stroke. It is TMC's focus to provide timely and proper treatment for stroke patients no matter where they may reside or require care.



FIT-Friendly Worksite: Platinum Recognition 2013

Fit-Friendly Worksites are recognized by the American Heart Association as employers who go above and beyond when it comes to their employees' health

Tulane University Heart and Vascular Institute

The Tulane University Heart and Vascular Institute (TUHVI) encompass leading clinical, educational and research programs for the prevention and treatment of cardiovascular diseases. TUHVI offers a comprehensive heart and vascular program at four locations – Metairie, downtown New Orleans, New Orleans East, and on the West Bank at Woodland Drive and General deGaulle.



TUHVI faculty are leaders of research and development in their subspecialty, often sharing their knowledge by lecturing around the country regarding the latest methods of treating cardiac and peripheral artery disease. TUHVI physicians also serve as clinical investigators, participating in a growing number of clinical trials.

In 2012, TMC partnered with the School of Medicine to hire a dedicated Vascular Surgeon to help meet the needs of our patient population.

Additionally, in 2013, TMC obtained the most current CPC accreditations for both PCI and Chest Pain to continue the foundation of excellence started when TMC was the first accredited Chest Pain Center in the state of Louisiana.

The Tulane University School of Public Health and Tropical Medicine with the Tulane University Heart and Vascular Institute is the site of the world-renowned Bogalusa heart study, a population-based longitudinal study of cardiac risk factors which has been under the direction of Dr. Gerald Berenson for more than 40 years. Tulane University Heart and Vascular Institute is the recipient of four additional NIH grants to conduct cardiovascular research.

Cancer

Comprehensive Cancer Clinic

Tulane Comprehensive Cancer Clinic provides programs and services for the detection, diagnosis, treatment, support and follow-up care for people with cancer and hematologic malignancies. Our distinguished team of experts offers the most advanced treatments for patients with cancer and the opportunity to participate in Clinical Trials locally. TMC provides a multidisciplinary approach to care including Medical Oncology, Surgical Oncology, GYN Oncology, Radiation Oncology, Hematology Oncology and Stem Cell Transplant. In 2013, TMC and the School of Medicine partnered to establish an additional FT Medical Oncology provider to help meet the clinical needs of the growing hepatobiliary population.

The Comprehensive Cancer Clinic presents an individualized approach to care which includes services available through psychosocial, nutritional, nursing, Arts In Medicine (AIM), spiritual, and survivorship. TMC has an Oncology Nurse Navigator who will assist patients in navigating their course through their treatment journey. TMC's Comprehensive Cancer Clinic received recognition from The Commission on Cancer (COC) of American College of Surgeons for achieving excellence in providing quality cancer care. COC awards Cancer Programs who meet specified Oncology Standards to ensure patients have access to the full scope of services required to diagnose, treat, rehabilitate and support patients with cancer and their families. This recognition and accreditation affirms the commitment of the program to provide excellence in Cancer Care.

Skin Cancer Screening

Our Comprehensive Cancer Center offers annual screening for the general public in diagnosing skin Cancer. Skin cancer has a 95% cure rate through treatment when detected early. This is good news, as skin cancer is the most common form of cancer diagnosed.

Nurse Navigator

The Comprehensive Cancer Clinic's Nurse Navigator educates, navigates and advocates the person with cancer throughout their entire cancer treatment and beyond. A Navigator program helps to improve patient outcomes by working to eliminate barriers to care. A Navigator is the center of information for cancer resources and community support services. Navigators often function as the cancer patient's care coach. The Comprehensive Cancer Clinic's Nurse Navigator streamlines processes for Oncology patients and addresses the unique needs of the patient, medical team and our referring physicians.

ASC Patient Navigator

The Patient Navigator helps to identify barriers that may disrupt a patient's continuity of care. The navigator guides patients through the healthcare system and introduces community resources which directly benefit cancer patients such as assistance with transportation, medications, co-pays, and support groups. We avail all patients the vast resources through our partnership with the American Cancer Society and provide patients and their families with much needed educational materials and support services.

Lung Cancer Screening Program

Lung cancer is the leading cause of cancer-related death in the United States. Detecting lung cancer at its earliest stage, and having it surgically removed, means a person can expect a five-year survival rate close to 70 percent. To meet the demand for higher resolution imaging while reducing the amount of radiation our patients are exposed to, in 2013 TMC invested in a new low-dose computed tomography (CT) scanner. Now Tulane-Lakeside Hospital offers screening with low-dose CT scanner for people at high risk for lung cancer. This non-invasive, painless test only takes a few minutes

Online Assessment Tools

The Breast Cancer Risk Assessment and Prostate Cancer Risk Assessment are provided on TMC's website to help alert our community to the warning signs of these cancers. These tools also allow our community to self screen for factors that predispose them to developing breast or prostate cancer, while including pertinent information to make educated health decisions.

Diabetes

Center for Diabetes

The Center for Diabetes at TMC is an American Diabetes Association (ADA) recognized program. It is primarily a multidisciplinary education resource offering care and counseling for pediatric and adult patients with diabetes, providing services for patients who are hospitalized as well as appointments for outpatients.

The Center for Diabetes Education approaches the treatment of each person with diabetes through aggressive and comprehensive medical management. It provides education on self-care skills, self-management, and counseling on medical nutrition therapy for adult and pediatric patients and their families. Individual patients are assessed and given instruction according to

the American Diabetes Association's Standards for Recognized Quality Self-Management Education programs.

HIV/AIDS

Adolescent Medicine

Foci of the Section of Adolescent Medicine activities are community-based primary care and prevention services, school and university health services and research particularly in the area of Adolescent HIV/AIDS. The Section was founded in 1988 to provide medical students and residents experience and training in the care of adolescents.

Comprehensive Cancer Clinic

Our Cancer Center also treats AIDS associated cancers that occur during this most advanced stage of HIV. People with HIV/AIDS have a high risk of developing certain cancers, such as Kaposi sarcoma, non-Hodgkin lymphoma, and cervical cancer. For people with HIV, these three cancers are often called "AIDS-defining conditions," meaning that if a person with an HIV infection has one of these cancers it can signify the development of AIDS.

Infectious Disease

Since the early days of the HIV epidemic in the 1980s, we have been involved in some of the seminal clinical trials of treatment of opportunistic infections and antiretroviral therapy. Under the auspices of the AIDS Clinical Trials Group (ACTG), we were a major site for studies on pneumocystis pneumonia, cryptococcal meningitis, PML and DMAC. As a member of the NIH-supported Community Programs for Clinical Research on AIDS (CPCRA), we enrolled patients into pivotal trials for the prevention of PCP, CMV retinitis and DMAC.

More recently, our former CPCRA unit, the Louisiana Community AIDS Research Program (LaCARP), has evolved into a site of the newly constituted International Network for Strategic Initiatives in Global HIV Trials (INSIGHT), which has sites all over the world. The Tulane unit was a part of the recently completed ESPRIT study, which showed no clinical benefit from the addition of IL-2 to HAART in persons with HIV infection. In 2009, we became a site for the pilot phase of the START study, which will re-examine the issue of when to start HAART. The second phase, full scale START study began in late 2010 and will continue for several more years.

Women's Health

Childhood and More (Prenatal Care Classes)

TMC offers classes to individuals and families expecting a new born. These classes incorporate the essential knowledge for mother's (and family members) in breastfeeding, birthing, newborn health, and even sibling roles just to name a few of the classes.

Tulane Center for Women's Health

Whether you are pregnant, facing illness or just in need of a check-up, the Tulane Center for Women's Health is here to deliver, diagnose, prevent and treat almost anything that women in our community need. Our specialized healthcare team concentrates on awareness, prevention, diagnosis and treatment to meet the challenges of every phase of a woman's life in our community. Additionally, recognizing the complex and unique needs of women and children, TMC has made significant strides toward enhancing the expertise of services available for this population through the expansion of OB and pediatric services in the community and through the consolidation of services at Tulane Lakeside Hospital scheduled for 2014.

Respiratory Health

Tulane Lung Center

The Pulmonary Clinic in conjunction with the Tulane Lung Center, at TMC, offers personalized, state-of-the-art care and treatment for diseases that attack the lungs and respiratory system, also known as pulmonary diseases. In 2012, TMC added one of twenty interventional pulmonologists in the country to properly treat our patients, and made significant capital investments to support this unique capability.

Holding a reputation for excellence, we offer a comprehensive range of consultative services using the newest lung diseases diagnosis and therapy methods. Our pulmonary physicians specialize in evaluating and treating a full range of pulmonary and lung conditions.

Adolescent Health

School Based Health Centers

Thanks to funding from the GE Foundation and support from the Louisiana Public Health Institute School Health Connection, Tulane University School of Medicine's Adolescent Medicine Department operates a School Based Health Center within Warren Easton Charter School and Walter L. Cohen High School. These clinics provide comprehensive care to students within those institutions.

Community Pediatrics and Global Health

We seek to establish programs which address the challenges of domestic and global healthcare disparities through two divisions: Division of Community Pediatrics and the Division of Global Health. We strive to achieve our mission through clinical services on two mobile units, didactics, research, and fostering local and international partnerships.

Pediatric Pulmonology

The section of pediatric pulmonology is recognized as one of the premier clinical referral sites in the gulf coast region. Our Pediatric Pulmonologists provide unparalleled care with expertise in cystic fibrosis, asthma, chronic respiratory failure and respiratory complications of neuromuscular diseases providing specialized and managed care services for our youth. Other programs under this umbrella include but are not limited to the Cystic Fibrosis Care Center,

Asthma Care, Airway Program, Apnea/Chronic Lung Disease of Infancy, and Pulmonary Function Testing.

Pediatric Sickle Cell Clinic

The pediatric sickle cell clinic is for patients from birth until early adulthood. We provide care in a comprehensive setting that includes a specialized sickle cell nurse and a sickle cell social worker. The focus of this clinic is on sickle cell disease treatment as well as on education and teaching both the patients and their parents. With two leading pediatric hematologists TMC and Tulane University School of Medicine in conjunction with the Sickle Cell Center of Southern Louisiana work tirelessly to treat our community's youth.

Barriers

Informational News Segments

Throughout the year several of our highly qualified physicians present and speak during radio and news segments to educate the New Orleans Community. These services are provided to increase awareness, and provide pertinent information during times of need and for the greater good of the community. These segments also serve as an opportunity to educate our community as to services that should be sought out. Information provided may even include services available at TMC. Segments have covered issues including but not limited to Stroke Awareness Month, Kidney Stones, Cold season remedies, and Abdominal Aneurysm screening to name a few.

Gambit Wellness Expo

This popular event gives the community an opportunity to learn about the latest trends and developments in the fitness, nutrition, alternative health care, beauty and medical fields. Attendees enjoy participating in demonstrations & health screenings, sampling products and more at this interactive showcase. At the expo, TMC offers blood pressure screenings, stroke prevention information, car seat safety checks, mammogram appointment scheduling, and question-and-answer sessions with doctors about women's and pediatric health issues.

Community Festival First Aid Services

In addition to being an annual sponsor for several festivals in the area such as French Quarter Festival and Satchmo Festival, TMC also provides first aid stations that disseminate current health information. This information is current with needs of the community and displays services offered by TMC's excellent healthcare providers.

Primary Care Clinics

TMC's primary care specialists are committed to providing excellent healthcare services to any family member of any age with any problem. Conveniently located, the clinics provide pediatric and adult services ranging from diagnosis and treatment of minor illnesses to routine checkups. With locations across Uptown, Downtown, and in Metairie we seek provide greater access to primary care and prevent unnecessary costs to patients.

NEXT STEPS

TMC has and will continue to incorporate the Community Health Needs Assessment into its strategic and planning activities. As is evidenced herein, efforts in the past 24 months have definitely made favorable progress. With common purpose and determination to address the needs of the community we serve, TMC embraces the opportunity to pursue initiatives, programs and outreach that bring about better health standards in the New Orleans area. TMC also recognizes that it cannot accomplish this mission alone, with the continued efforts between TMC, Tulane University School of Medicine, and collaborations with other healthcare organizations a high level of care, prevention, and health maintenance for our community will be ensured for generations to come.

APPENDIX:

Key Stakeholder Organizations

Representatives from the following community based organizations provided detailed input during the regional community health needs assessment process:

- Catholic Charities
- Kingsley House
- Delgado-Charity School of Nursing
- Blue Cross Blue Shield
- Acadian Ambulance
- United Way for the GNO Area
- Covenant House New Orleans
- Baptist Community Ministries
- LSUHSC
- VOA - New Orleans
- Second Harvest Food Bank
- Jefferson Parish Public School System
- Louisiana Association of United Ways
- New Orleans Hornets (NBA team)
- United Healthcare Louisiana
- Humana Louisiana
- Prevention Research Center Tulane University
- St Thomas Community Health Center
- Louisiana Office of Public Health
- JEDCO
- West Jefferson Medical Center
- Entergy
- Gulf Coast Bank and Trust
- American Cancer Society
- NO/AIDS Task Force
- Louisiana Cancer Research Consortium
- American Heart Association
- Susan G. Komen, New Orleans
- New Orleans Health Dept.
- State of Louisiana Leadership
- Jefferson Parish Human Svcs. Authority
- Jefferson Parish Chamber of Commerce
- Hispanic Apostolate Community Services
- Catholic Charities Archdiocese of New Orleans
- Jefferson Parish Sheriff Dept.
- Neonatal Medical Group
- City of Slidell Leadership
- Acadian Ambulance Service
- STPH Community Wellness Center
- St. Tammany West Chamber of Commerce
- St. Tammany Parish Government
- St. Tammany Parish Government
- Greater New Orleans YMCA
- Seniors and Law Enforcement Together (SALT)
- STPH Parenting Center
- St. Tammany EDF
- St. Tammany Parish Fire District 4
- St. Tammany Parish Sheriff's Office
- City of Covington Leadership
- Northshore Healthcare Alliance
- New Orleans Health Dept.
- Ochsner Kenner
- Operations Vineyard Church
- Kenner Kiwanis Board Member
- The Dial Corporation
- City of Kenner Leadership
- St. Charles Community Health Center

- Dept. of Community Services, Archdiocese of New Orleans
- The Plaquemines Gazette
- Daul Insurance
- Algiers Economic Development
- Pickering and Cotogno
- City of New Orleans Leadership
- Institute of Mental Hygiene
- Northshore Rotary Club
- City of Slidell Leadership
- East St. Tammany Chamber of Commerce
- Ochsner Northshore
- Delgado Community College
- LSU Health Science Center, Allied Health
- LSU Health Science Center, Nursing
- Tulane University School of Medicine
- Xavier University, New Orleans
- LSU Health Science Center, Medical Students
- Tulane Medical Center